

Connections



Volume XXIV No. 2

Winter 2006

Voters weigh in on two bond proposals in Feb. 28 election

Northville voters will be asked to decide two critical education issues when they go to the polls on February 28. On the ballot will be two bond requests totaling \$70.67 million that address Northville Public Schools' skyrocketing student enrollment (more than 1,500 new K-12 students in the past five years) and make long-delayed capital improvements to district facilities.

The decision by the Board of Education to bring both bond proposals before voters is the culmination of more than eight months of study by three community committees that examined district enrollment trends, short- and long-term facility

needs, as well as input from two community town hall meetings and more than 200 hours of study by the school board.



The attraction of the Northville community has brought record student enrollment for Northville Public Schools, a trend that is expected to continue.

Inside this issue of *Connections* is an overview of the two proposals — what they will mean for Northville students and the community and the impact passage will have on taxpayers. For the most complete explanation of the proposed bond projects, including enrollment and cost data, photos, architectural renderings, virtual tours and answers to frequently asked questions, visit the district web site (www.northville.k12.mi.us).

2006 Bond Proposals At-A-Glance

- **Proposal I: Seventh Elementary School** — \$25.24 million to purchase land and construct the district's seventh elementary school east of Napier Road between Six and Seven Mile roads.

- **Proposal II: New Construction, Facility Addition and Building Improvements** — \$45.43 million for strategic projects that will respond to the district's record and projected growth, as well as make long-delayed capital improvements to district facilities. These projects include:

- \$17.2 million for a Field House Addition at Northville High School to provide much-needed space for physical education classes and after-school athletic programs.

- \$5.28 million for improvements at the district's Eight-Mile Stadium that include replacing aging facilities and installing synthetic turf at the stadium as well as the high school.

- \$6.2 million to replace the district's 40-year-old Transportation Facility located adjacent to the Eight-Mile Stadium.

- \$6.9 million to renovate the Main Street School building that includes replacing the 70-year-old heating system and refurbishing the historic building.

- \$9.85 million for capital improvements, technology upgrades and music program improvements at the district's school buildings.

Inside Connections

Page 2

Proposal I: 7th Elementary School
Addressing the student enrollment boom

Page 4

Check out complete Bond information and FAQs on the district web site

Page 3-7

Proposal II: New Construction,
Facility Addition and Building
Improvements

Page 5

Voting information for Feb. 28 election

Page 8

Impact of 2006 Bond Proposals
on property taxes

PROPOSAL I: Seventh Elementary School

New school helps district's student population boom

With the district's six elementary schools already near or over capacity, a seventh elementary school is needed to accommodate the more than 600 new Kindergarten through 5th grade students expected over the next five years.

The \$25.24 million bond request will purchase more than 23 acres from Northville Township in the heavy growth area near Six Mile and Napier Roads (once part of Thayer Corners Park) and construct the new 92,864-square-foot school. Since the opening in August 2003 of Ridge Wood Elementary, the district's sixth elementary school, more than 800 new single-family homes have been built in the Northville Public School district, many of those in the Six Mile and Seven Mile corridors west of Beck Road.

Even more significant growth is expected in the near future. Several major subdivisions are beginning or partially through development, including Park Place (Napier between 8 and 9 Mile); Steeplechase (west of Ridge between 6 and 7 Mile); Arcadia Ridge (Ridge between 5 and 6 Mile); Maybury Park Estates (8 Mile across from Maybury State Park); and Northville Ridge (adjacent to Ridge Wood Elementary). The yet to be determined development at the former state hospital site on Seven Mile Road has not been included in district projections. In addition, in the Lyon Township portion of the school district, two developments are in the planning stages that together will comprise more than 500 new homes.

The new elementary school will accommodate 600 K-5 students. The additional elementary school will put the district in a better position to



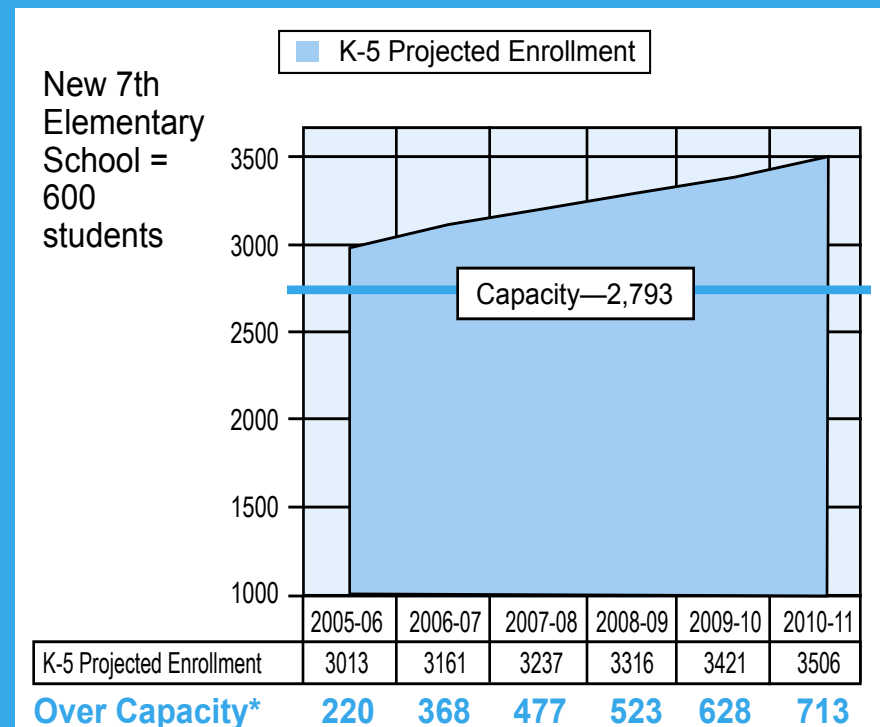
Fanning-Howey

The architectural design of the new elementary school is based on the Ridge Wood Elementary School design.

continue to maintain low class sizes, which has a direct impact on learning in the elementary grades.

The new school will be built using a similar architectural design as Ridge Wood's.

5-Year Elementary Enrollment Projections



PROPOSAL II: New Construction, Facility Addition and Building Improvements

Projects address growth, critical building upgrades

This second bond proposal for \$45.43 million includes five projects that also address the district’s record and projected growth, as well as make long-delayed capital repairs and upgrades to district facilities including much-needed space for the high school’s physical education curriculum and after-school athletic programs.



Fanning-Howey

The 61,698-square-foot Field House Addition will be connected to the current building on the west side.

High School Field House Addition

With enrollment at Northville High School topping 2,000 and climbing, additional facilities are needed for physical education classes and after-school athletic programs. The 61,698-square-foot addition will be connected to the current building on the west side near the bus drop-off entrance.

The \$17.2 million NHS Field House Addition will include three additional full-size courts, an indoor track, weight room, cardiovascular room, and a larger wrestling room. Synthetic turf also will be installed at the high school soccer and practice fields (as well as at the Eight-Mile Stadium) and will be available for use by physical education classes, the marching band and for team practices and games.

Addressing physical education curriculum needs

Since the high school opened in 2000-01, enrollment has increased by 532 students to 2,087 this year. The addition of a 49,457-square-foot academic wing on the east side of the building in 2003 addressed the need for additional academic space.

Yet, the current physical education facilities of two gyms, one weight room and one classroom cannot accommo-

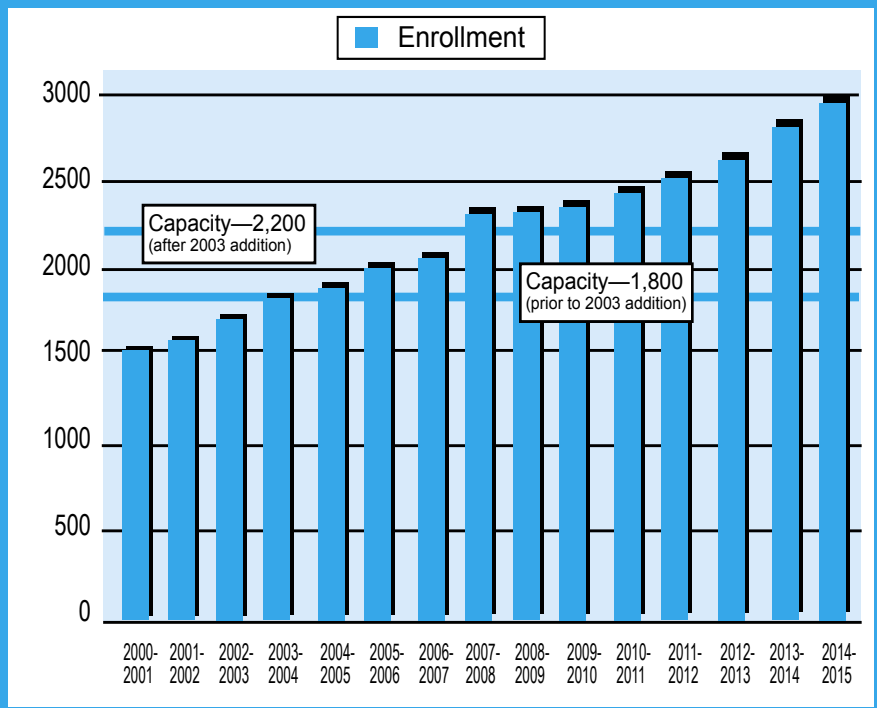
date the nearly 1,500 high school students who take physical education classes each year. Currently, physical education classes average 35.5 stu-

dents per class.

With enrollment at the high school expected to be nearly 2,500 by the

Continued on page 4

NHS Student Enrollment Growth/Projections



PROPOSAL II

Continued from page 3

2010-11 school year, the demand for physical education classes will continue to increase. All Northville High School students are required to take one credit of physical education (two one-semester classes) for graduation. The state legislature is expected to adopt a similar or more stringent requirement for all Michigan high school graduates this year.

Providing space for after-school athletics and activities

The Field House Addition also will provide more space for the high school's growing after-school athletic teams and clubs. More than half of all Northville High School students are currently participating in after-school athletics and activities. There are 54 athletic teams and five club sports at NHS — the largest number in the Western Lakes Activities Association.

With practice space at a premium, some teams currently practice or warm up in the school hallways and cafeteria. In the winter season, teams are organized into three or



Some teams practice or warm up in the school hallways and cafeteria.

more practice shifts with some teams practicing until 9:30 p.m. There is limited space available for off-season teams to begin conditioning. When the main gym is needed for competition, other teams are often forced to cancel practice or rent space at another facility.

The Field House Addition with three full-size courts will enable multiple teams to practice at one time reducing the number of practice shifts. There will be space available for off-season teams to condition and teams will no longer need to rent practice space on competition nights or during inclement weather.

Eight-Mile Stadium Improvements and Synthetic Turf

The \$5.28 million in improvements planned for the Eight-Mile Stadium will replace aging facilities and fields to meet the needs of the district's growing athletic programs. The improvements will be two-pronged:

- Replacement of facilities and the track at the Eight-Mile Stadium.
- Installation of synthetic turf at the Eight-Mile Stadium and the high school soccer and practice fields located on the Six Mile Road campus.

Aging stadium in need of updates

Projects include replacing team rooms, concessions and restrooms, the press box and public address system, fencing and walkways, entrance gates and bleachers for the band and visitors.

Built in 1961, the stadium has undergone only one major renovation in 1989 when new team rooms and home bleachers were built. At that time, the track also was recovered with a rubber coating. When the community was

FAQ

Frequently Asked Questions

Have questions about the district's February 28 bond election?

Check out the district's web site (www.northville.k12.mi.us) for the most complete coverage of the two bond proposals including answers to the most frequently asked questions (FAQs). Just click on the "Bond 2006 Election Information" icon. Then click on the area you would like to learn more about.

There also is a place to submit your own questions via e-mail with responses sent back to you personally by school officials.

Questions answered on the district FAQ site:

- Why are there two bond proposals?
- Why doesn't the bond proposal include an academic addition at the high school?
- Will the opening of the new elementary school relieve overcrowding at other elementary schools?
- What will happen if the two bond proposals don't pass?

Get the answers to these questions and more on the district web site!

Continued on page 5

PROPOSAL II

Continued from page 4

asked to support construction of the new high school on Six Mile Road, the commitment was made by the district to maintain the football stadium in its popular downtown location.

Located on the north side of Eight Mile across from Hillside Middle School (the former high school), the stadium is home to the Northville Mustangs Marching Band, three football teams (Freshman, Junior Varsity and Varsity) and two lacrosse teams, as well as the Hillside Raiders football and track teams. Several community organizations also rent the field including the Northville Colts football program in the fall and the Our Lady of Victory track team in the spring.

Synthetic turf reduces maintenance costs, increases field use

The new surface at the Eight-Mile Stadium and high school fields will ease maintenance and enable the district to significantly increase field use for school and community programs.

Composed of thermoplastic fiber that is filled with rubber, sand or a combination of both, the turf is expected to last

15 years or longer. Many Detroit-area high schools have moved to synthetic turf in recent years including Troy, Rochester, Livonia, Lake Orion, Clarkston, Farmington Hills, Birmingham, West Bloomfield and Ferndale. All other high schools in the Western Lakes Athletic Association have synthetic turf.

The synthetic turf requires no mowing, watering, fertilizing or reseeding. Regular maintenance involves brushing or occasional vacuuming using leased, rented or loaned equipment. Schools that have installed the turf have reported a reduction in maintenance costs of as much as \$30,000 per year or more.

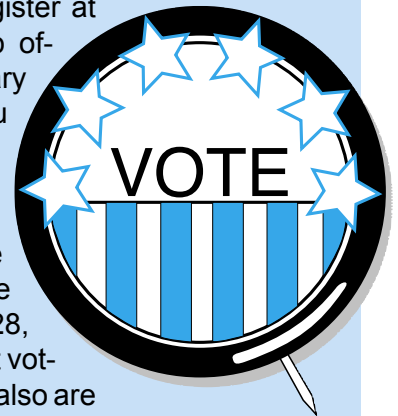
The new surface at the Eight-Mile Stadium and Northville High School soccer and practice fields will ease

Continued on page 6

Voting Information February 28 Bond Election

If you are not registered to vote in the community, you must do so by Monday, January 30, in order to participate in the February 28 Bond Election. You can register at your city or township offices or any Secretary of State Office. You must register in person.

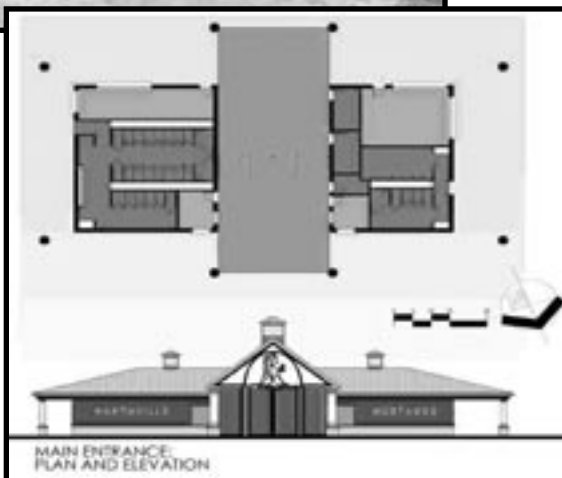
Absentee ballot applications, for those unable to get to the polls on February 28, and information about voting precinct locations also are available at your city or township offices.



**Polls are open from 7 a.m. to 8 p.m.
February 28, 2006**



The current 8 Mile Stadium main entrance is not able to accommodate the large number of spectators on a stairway that is steep, narrow and not ADA accessible.



An architectural rendering of the proposed Eight-Mile Stadium main entrance near Cooke School.

Notice of Non-Discrimination Policy

It is the policy of the Board of Education and the School District not to unlawfully discriminate on the basis of age, race, color, national origin, religion, height, weight, marital status, handicap or disability. Concerns or questions may be directed to the following individuals at 248.349.3400: Title IX, Katie Parker, Director of Instructional Projects; Title VI, Dr. Casey Reason, Assistant Superintendent for Instruction; and Section 504, Special Services Department (See Board Policy No. 1440.93).

PROPOSAL II

Continued from page 5

maintenance and enable the district to increase field use three-fold for school physical education classes, band and team practices, and games and community programs. Currently, high school teams often practice at other locations, including Northville Community Park and Meads Mill Middle School, so that the grass fields remain in good shape for competition.



The current 1960s-era Transportation garage is outdated and overcrowded

New Transportation Facility

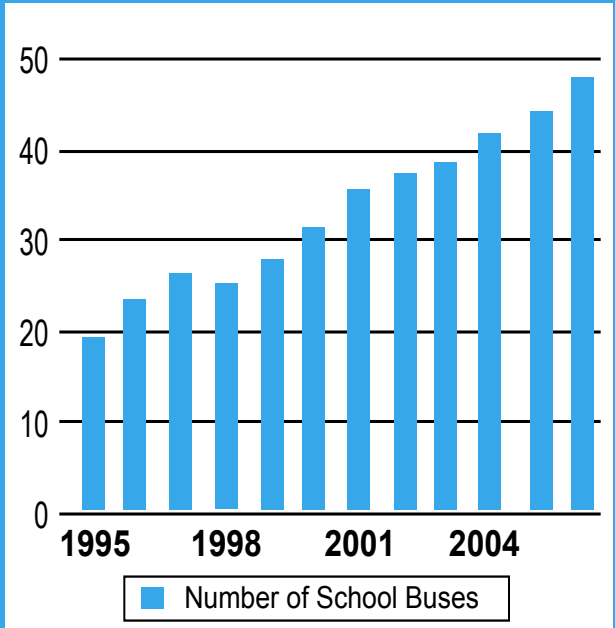
As the school district has grown, so has its transportation needs. Since 1995, the number of buses has more than doubled from 20 to 49. Northville school buses cover a 26-square-mile area, transporting more than 2,400 students to school each day (4,400 students are eligible to ride the bus.)

Located adjacent to the Eight-Mile Stadium, the district's current 40-year-old Transportation Facility lacks the space and equipment needed to store and maintain the growing fleet. The new 20,494-square-foot, \$6.2 million facility will have three drive-through work bays and one bus wash (the current building has only two usable bays), a larger overhead storage space for parts, a training and drivers waiting area, and a larger parking lot.

The new garage will provide improved technology for bus maintenance and repair, thus increasing staff efficiency and ensuring improved safety. Floor jacks will be replaced with hydraulic lift systems to ease maintenance and repairs and a computerized diagnostic system (similar to the ones that auto mechanics use) will be installed to pinpoint problems early, minimizing costly repairs and keeping buses on the road. The funds also will purchase five new buses to help replace aging vehicles and manage

NPS School Buses 1995-2006

Proposal II includes a request to purchase five new buses to replace aging vehicles and help manage growing student enrollment.



growing student enrollment.

Because of the proximity of the Transportation Facility to the Eight-Mile Stadium, a significant savings in construction costs and time will be realized by doing the two projects simultaneously.

Continued on page 7

Lowered debt millage offsets tax increase

In the past nine years, Northville School District residents have approved three important bond issues totaling \$125.5 million in response to the community's robust growth.

Since these three bond issues were approved, increasing property values have enabled the district to lower its debt millage by 1.05 mills during that period. That has meant a property tax reduction of \$210 per year on a home with a taxable value of \$200,000 (market value of \$400,000).

PROPOSAL II

Continued from page 6

Main Street School Renovations

Main Street School’s condensed steam boiler heating system, original to the 1936 historic building, is in much need of replacement. It is not only difficult to maintain, but also nearly impossible to repair as parts are no longer available.

Given the scope of the new heating, ventilation and cooling system installation (which will require taking down walls and ceilings to remove the hydronic pipe system that carries the steam heat), the building’s interior will be renovated at the same time. Other projects included in the \$6.9 million in improvements are:

- Electrical system upgrades.
- Replacement and restoration of the roof.
- Installation of new, more energy efficient windows.
- Carpet replacement, office remodeling, furniture and office equipment replacement.
- Replacement of asphalt and concrete at the building entrance and west parking lot.

Care will be taken during the renovations to retain the historic character of the downtown building. The former elementary school building currently houses the district’s Board of Education and Administrative offices, Maintenance offices and work areas, as well as Special Education offices and Early Childhood programming offices and classrooms.

School Building Repairs and Renovations; Technology Upgrades; Music Program Improvements

School buildings across the district are in need of repairs and enhancements to maintain a healthy and safe learning environment for all students. More than half of Northville’s school buildings were constructed prior to 1975 — some much earlier.

Among the projects included in the \$9.85 million in improvement are:

- Replacement of classroom storage units at the elementary schools.
- Replacement of existing plumbing fixtures.
- Sidewalk and asphalt replacement.
- Replacement of aging classroom furniture and office equipment.
- Educational technology enhancements.
- Replacement of music equipment and additional equipment storage throughout the district.
- Installation of classroom marker boards and replacement of tack boards.
- Ceiling tile and grid replacement.
- Renovation of three Hillside tennis courts and the addition of an outdoor basketball court.



Located in the heart of Northville’s Historic District, the Main Street building has been a mainstay of the school district for 70 years.

Main Street School has a place in history

The Main Street Elementary School building is one of the school district’s most historic structures.

The school is one of only three of this particular architectural style in the United States. Two others were built in Boston, Massachusetts, and Sault St. Marie, Michigan. Lydon and Smith, the architectural firm that designed the building, won numerous awards for the school’s then “modern” design, and the American Institute of Architects exhibited photographs of the school in Europe.

Here are a few other historic facts:

- Built in 1936-37, the school was dedicated on April 22, 1937.
- Construction was funded through the Works Progress Administration (WPA) during Franklin Roosevelt’s administration.
- Total construction cost, \$99,000.
- The school was initially designed for 400 students.
- By 1949, it housed 551 students with additional school space provided in three houses on the south side of Main between West and Wing streets.
- An addition was constructed in the 1940’s and renovated in 1970 and again in 1989.
- In 1980, the Northville Public Schools received an energy conservation grant to replace windows.



Remember to vote
Tuesday, February 28, 2006

Impact on Taxpayers

Although the \$70.67 million bond request totals 1.59 mills (.56 mills for Proposal I and 1.03 mills for Proposal II), the overall property tax increase for the two proposals will actually be just .90 mills for 20 years.

As the community has grown, the existing bond costs have been spread among more taxpayers reducing the current burden by .69 mills for individual homeowners.

1.59 mill bond request
- .69 mill reduction in current tax burden
.90 mill overall increase

A mill represents \$1 for every \$1,000 of taxable value of your property. Therefore, the overall .90 mill increase represents 90 cents for every \$1,000 of taxable value.

Any tax increase will be offset to some extent by enhanced property values that result from continuing to operate a top quality school system. Also, property taxes, including any increases, may be deductible on federal income tax returns and may be a credit on state returns.

Impact of .90 Mill Increase on Annual Property Tax Bills

Market Value	Taxable Value*	Maximum Annual Tax Increase
\$200,000	\$100,000	\$ 90
\$300,000	\$150,000	\$135
\$400,000	\$200,000	\$180
\$500,000	\$250,000	\$225
\$600,000	\$300,000	\$270

* Taxable value is lower than state equalized value (unless home has been recently purchased) and substantially lower (50 percent or more) than market value.

Northville Public Schools Board of Education

501 West Main Street
Northville, Michigan 48167

NON-PROFIT
ORG.
U.S. Postage
PAID
Permit No. 69
Northville, MI 48167

- Dr. Karen Paciorek President
- Kenneth Roth Vice President
- Dr. Marilyn Price Secretary
- Joan Wadsworth Treasurer
- Judy Handley Trustee
- Libby Smith Trustee
- Judith Wollack Trustee
- Dr. Leonard Rezmierski Superintendent

- Janet Naughton Editor

ECRWSS
TO SCHOOL DISTRICT RESIDENTS

Visit our website at www.northville.k12.mi.us